

## Power distributor box, discretely placed

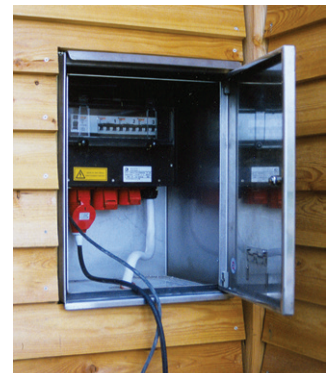
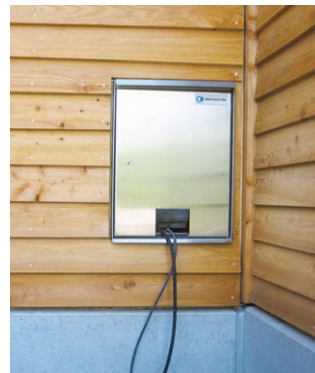
**Client:** Electric plumber Eckert Suhr  
**Planning:** Electric engineer Bärtsch Messerli, Oberentfelden  
**Object:** Open-air and indoor swimming pool Entfelden

### Starting situation:

- can also be used with closed doors
- low-maintenance
- replaces temporary installations

### Characteristics:

- V2A veneer cabinet with swing door and installed power distributorbox type 3800 discretely installed into the wooden facade and wooden/concrete facade
- lockable also in operating status (cable flap)
- socket outlet group T15/CEE 32/5 with fuse protection for operation maintenance as well as other occasions



V 0412